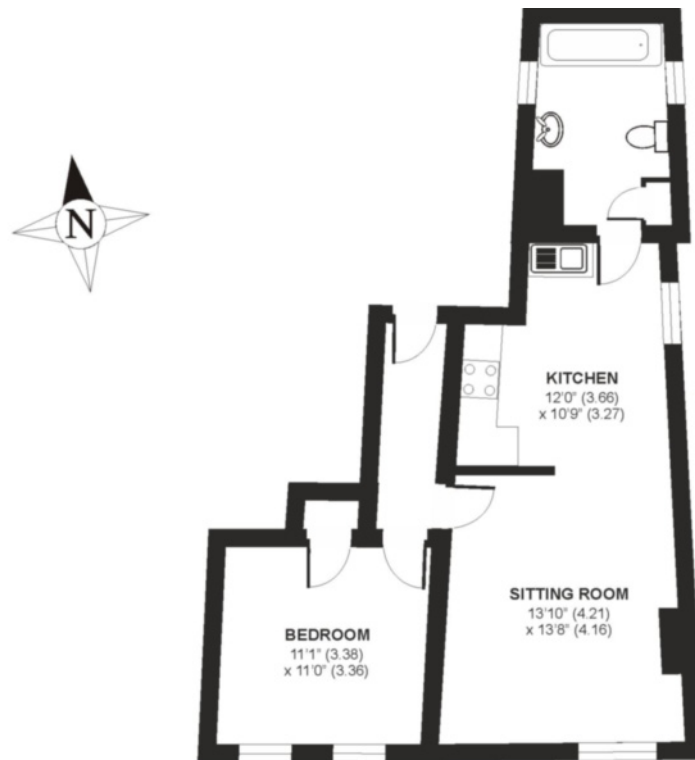




Chichester



Henry Adams Lettings Limited is delighted to offer a well presented first floor apartment located moments from The Cross in the centre of the City. Accommodation includes a good sized entrance hall, open plan living room and kitchen, double bedroom and bathroom.



Little London, Chichester

APPROX. GROSS INTERNAL FLOOR AREA 588 SQ FT / 54.7 SQM

Whilst every attempt has been made to ensure the accuracy of the floor plans contained here, measurements of doors, windows and rooms are approximate and no responsibility is taken for any error, omission or mis-statement. These plans are for identification purposes only and are not drawn to scale.

COPYRIGHT 2014 HENRY ADAMS LETTINGS

CREATED FOR HENRY ADAMS LETTINGS



* Please ask within for details or visit <http://www.henryadams.co.uk/lettings/process-and-fees>